



WALPOLE PUBLIC SCHOOLS SPRING 2013 MCAS TESTS

REPORT OF DISTRICT RESULTS
TO SCHOOL COMMITTEE

September 26, 2013



How Results are Reported

Performance Level	Description
Advanced/ Above Proficient 260-280	Students at this level demonstrate a comprehensive and in-depth understanding of rigorous subject matter and provide sophisticated solutions to complex problems.
Proficient 240-258	Students at this level demonstrate a solid understanding of challenging subject matter and solve a wide variety of problems.
Needs Improve- ment 220-238	Students at this level demonstrate a partial understanding of subject matter and solve some simple problems.
Warning/ Failing 200-218	Students at this level demonstrate a minimal understanding of subject matter and do not solve simple problems.

Composite Performance Index (CPI) measures how close a school or district is to having all students score in the **Proficient/Advanced** categories

Performance Level	Score	Proficiency Index
Advanced	260-280	100 Points
Proficient	240-258	100 Points
Needs Improvement	230-238	75 Points
	220-228	50 Points
Warning/Failing	210-218	25 Points
	200-208	0 Points



Tracking Student Progress

- MCAS performance level and scaled scores answer “How much has this student achieved compared to the state’s grade-level learning standards?”
- Student Growth Percentile (SGP) answers the question, “How much has this student achieved over the previous year compared to his or her academic peers?”
- SGP Compares students to “academic peers” (those who had similar historical MCAS results)



Student Growth Percentile Range

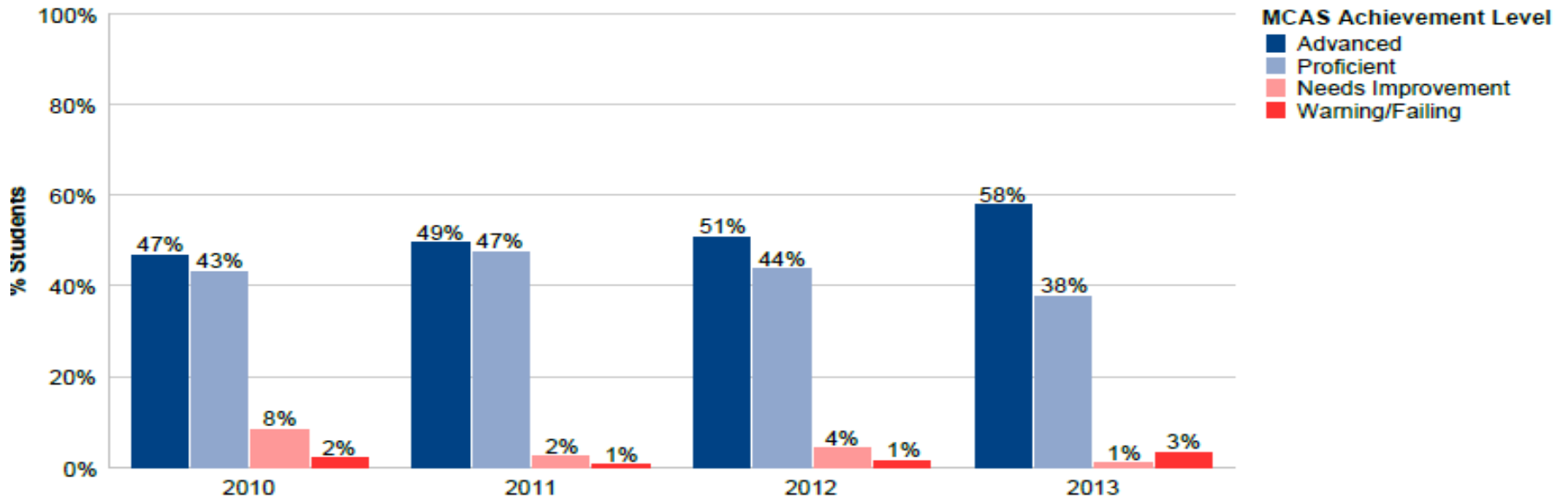
Range	Description
1-34	Lower Growth
35-65	Moderate Growth (compared to similar peers)
66-99	Higher Growth

Percent at Each Performance Level 2010-2013



Grade 10 ELA 2010-2013

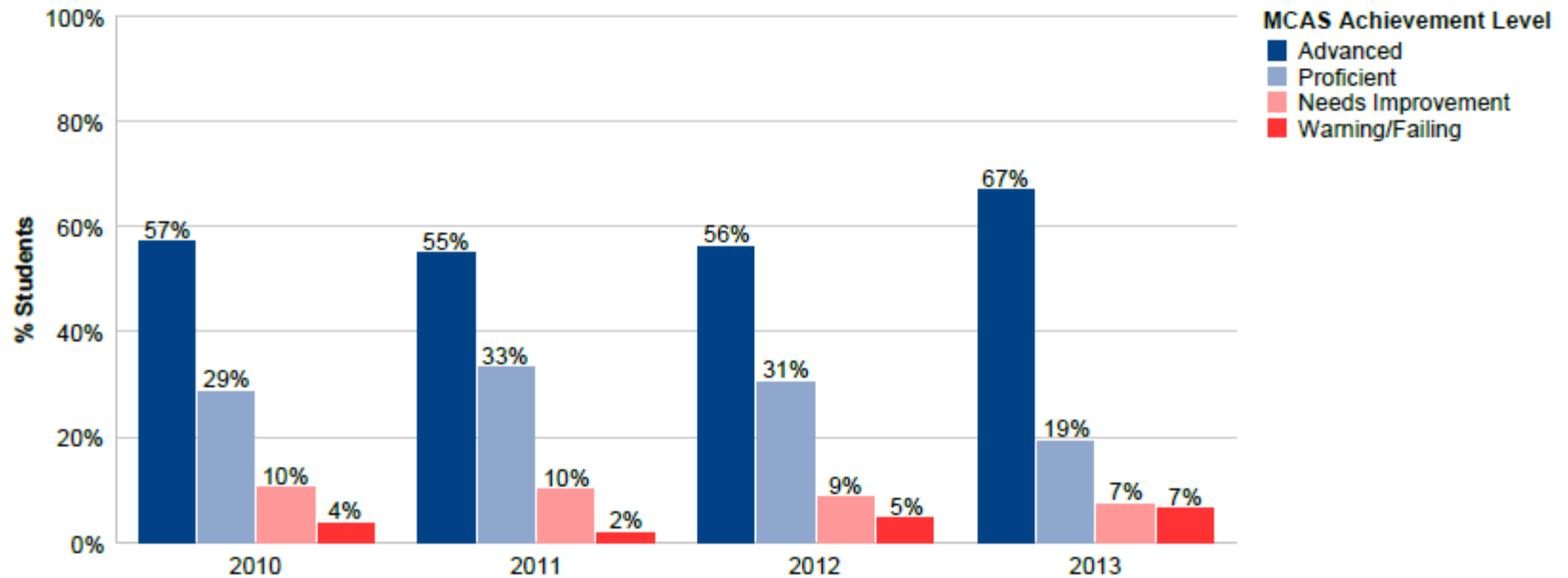
Student Group: All Students



	2010		2011		2012		2013	
	District	State	District	State	District	State	District	State
Advanced	47%	26%	49%	33%	51%	37%	58%	45%
Proficient	43%	52%	47%	51%	44%	51%	38%	46%
Needs Improvement	8%	18%	2%	13%	4%	9%	1%	7%
Warning/Failing	2%	4%	1%	3%	1%	3%	3%	2%
N Students	249	70,369	259	69,532	286	69,059	303	68,697
CPI	96.4	91.9	98.8	93.9	98.5	95.8	99.5	96.9
Median SGP	66.0	50.0	55.5	50.0	47.0	50.0	57.0	57.0

Grade 10 Math 2010-2013

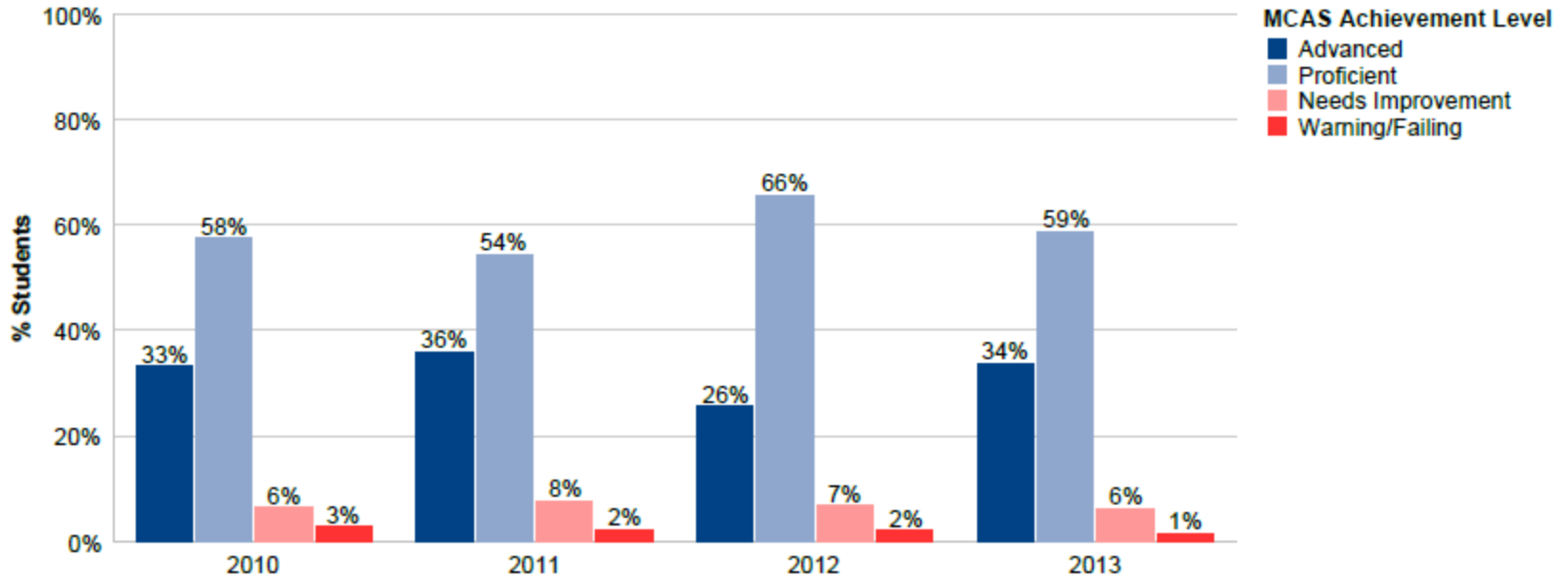
Student Group: All Students



	2010		2011		2012		2013	
	District	State	District	State	District	State	District	State
Advanced	57%	50%	55%	48%	56%	50%	67%	55%
Proficient	29%	25%	33%	29%	31%	28%	19%	25%
Needs Improvement	10%	17%	10%	16%	9%	15%	7%	13%
Warning/Failing	4%	7%	2%	7%	5%	7%	7%	7%
N Students	248	70,401	262	69,342	285	69,015	306	68,821
CPI	93.9	88.8	95.4	89.4	93.9	90.0	94.2	90.2
Median SGP	54.5	50.0	51.0	50.0	48.0	50.0	55.5	51.0

Grade 8 – ELA 2010-2013

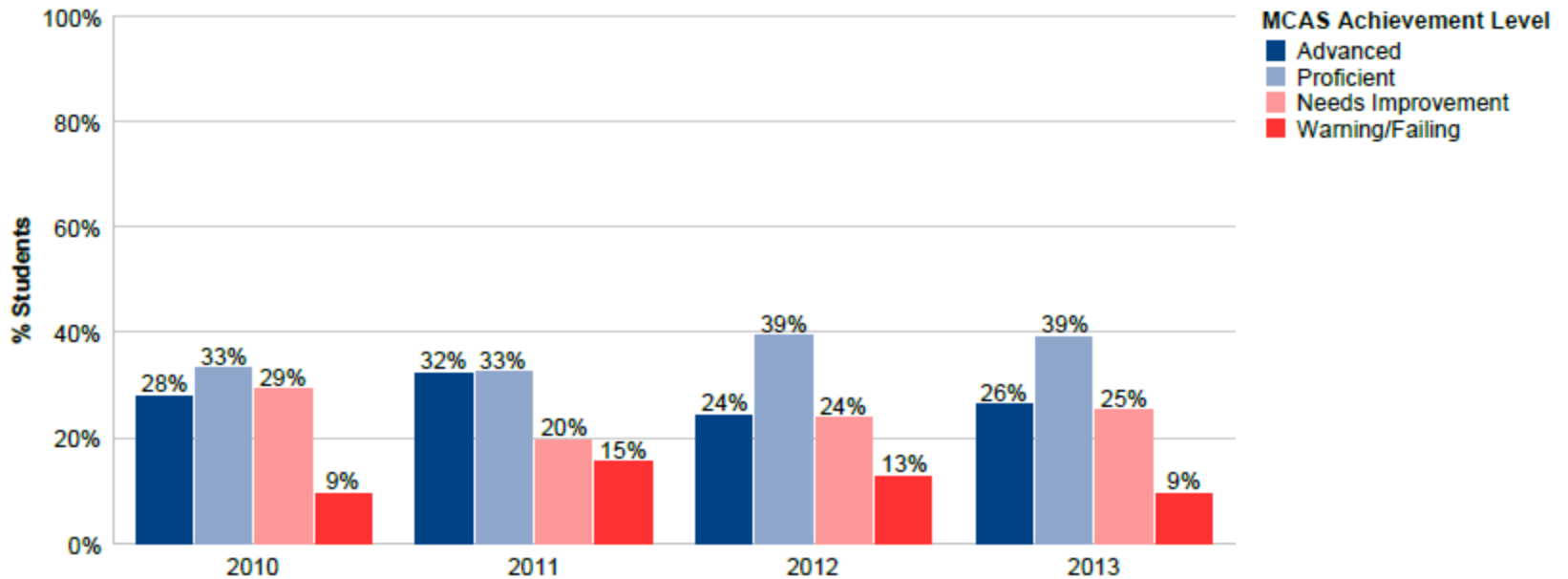
Student Group: All Students



	2010		2011		2012		2013	
	District	State	District	State	District	State	District	State
Advanced	33%	17%	36%	20%	26%	18%	34%	20%
Proficient	58%	61%	54%	59%	66%	63%	59%	58%
Needs Improvement	6%	16%	8%	15%	7%	14%	6%	15%
Warning/Failing	3%	7%	2%	6%	2%	6%	1%	7%
N Students	285	72,237	324	71,683	308	72,756	318	72,194
CPI	96.7	90.4	97.1	91.1	97.4	91.8	97.7	90.1
Median SGP	65.0	50.0	58.0	50.0	51.0	50.0	51.0	50.0

Grade 8 Math 2010-2013

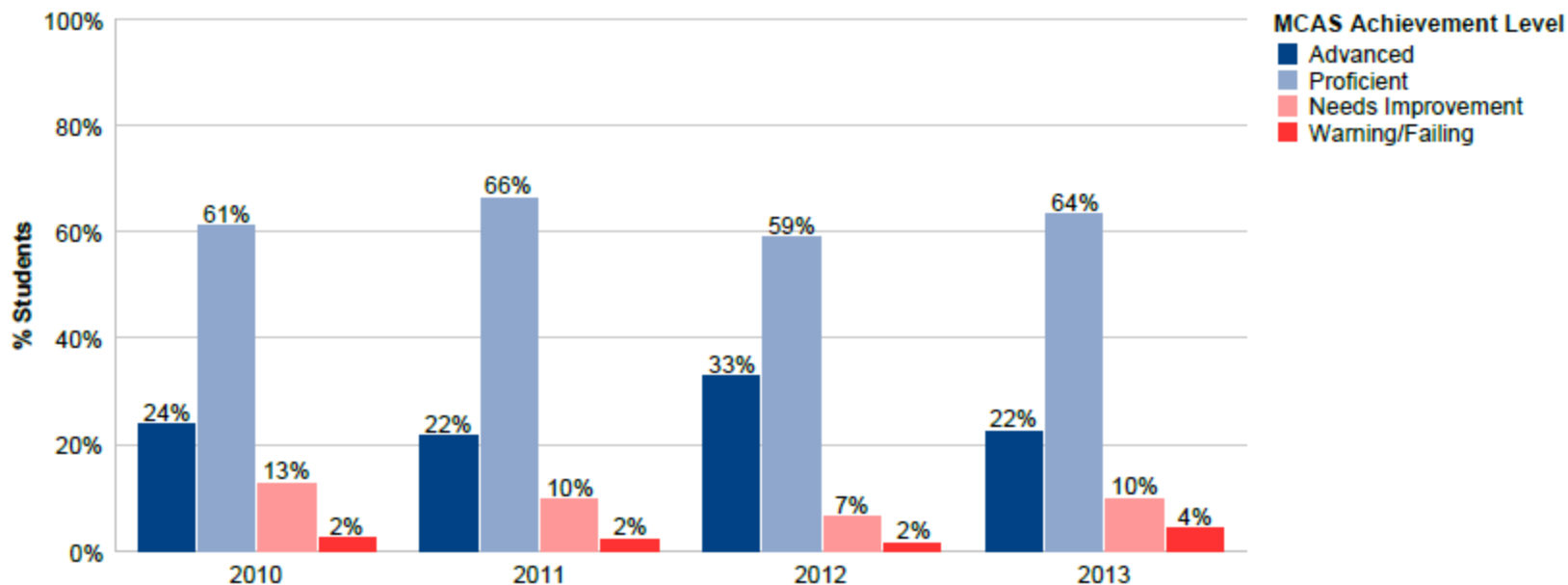
Student Group: All Students



	2010		2011		2012		2013	
	District	State	District	State	District	State	District	State
Advanced	28%	22%	32%	23%	24%	22%	26%	22%
Proficient	33%	29%	33%	29%	39%	30%	39%	32%
Needs Improvement	29%	28%	20%	27%	24%	28%	25%	25%
Warning/Failing	9%	21%	15%	21%	13%	19%	9%	20%
N Students	285	72,180	325	71,740	308	72,705	316	72,196
CPI	82.6	74.8	81.9	74.2	82.6	75.5	84.3	76.0
Median SGP	58.0	51.0	58.0	50.0	52.0	50.0	53.0	50.0

Grade 7 – ELA 2010-2013

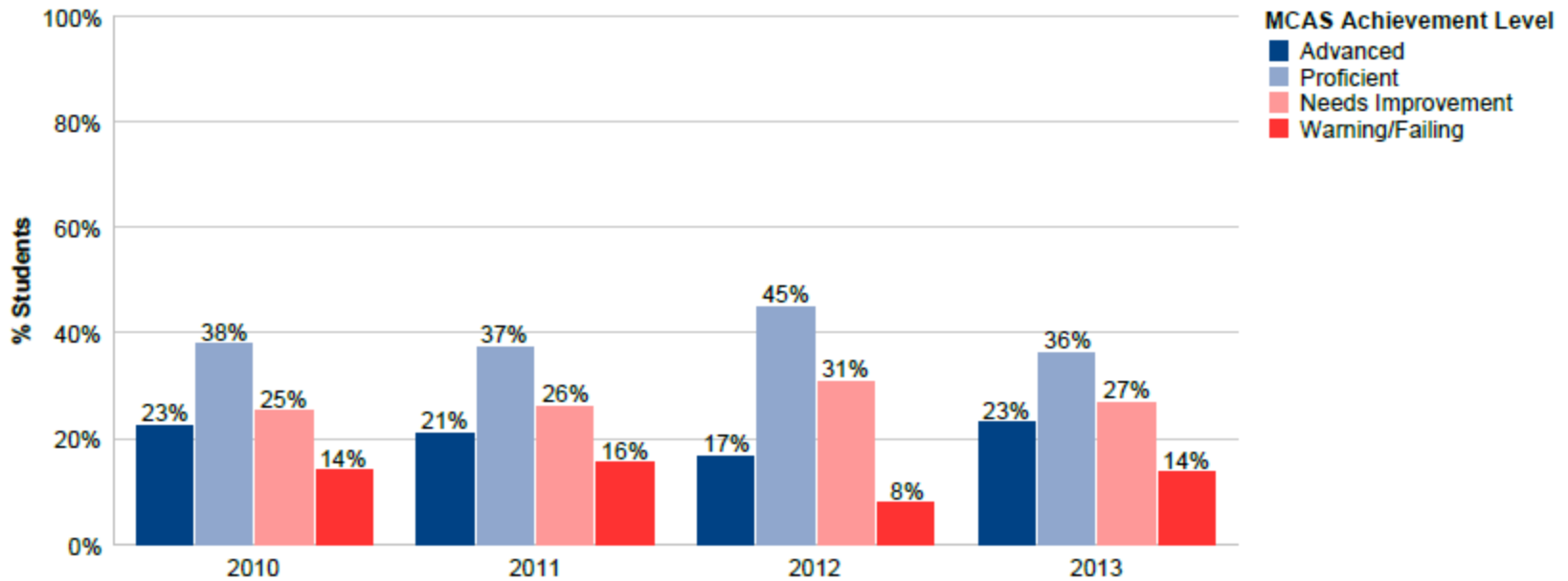
Student Group: All Students



	2010		2011		2012		2013	
	District	State	District	State	District	State	District	State
Advanced	24%	11%	22%	14%	33%	15%	22%	12%
Proficient	61%	61%	66%	59%	59%	56%	64%	59%
Needs Improvement	13%	21%	10%	21%	7%	21%	10%	22%
Warning/Failing	2%	7%	2%	6%	2%	7%	4%	7%
N Students	324	71,350	310	72,260	319	71,749	307	71,699
CPI	95.1	88.6	96.7	89.5	97.6	88.1	95.6	88.4
Median SGP	68.0	50.0	63.0	50.0	65.0	50.0	50.0	48.0

Grade 7 – Math 2010-2013

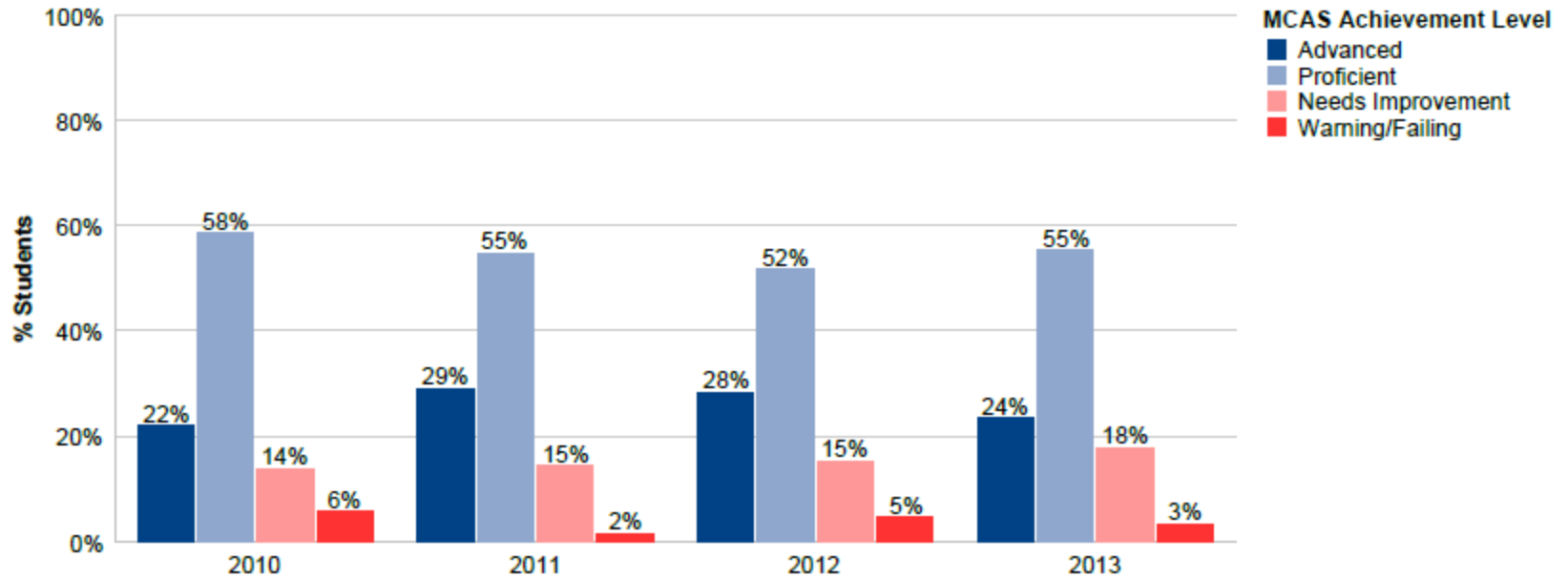
Student Group: All Students



	2010		2011		2012		2013	
	District	State	District	State	District	State	District	State
Advanced	23%	14%	21%	19%	17%	20%	23%	19%
Proficient	38%	39%	37%	32%	45%	31%	36%	33%
Needs Improvement	25%	27%	26%	27%	31%	30%	27%	27%
Warning/Failing	14%	19%	16%	22%	8%	18%	14%	21%
N Students	324	71,452	309	72,495	321	71,952	306	72,021
CPI	80.9	76.1	79.9	73.8	84.0	75.4	81.5	74.4
Median SGP	46.5	50.0	50.0	50.0	37.0	50.0	43.0	46.0

Grade 6 – ELA 2010-2013

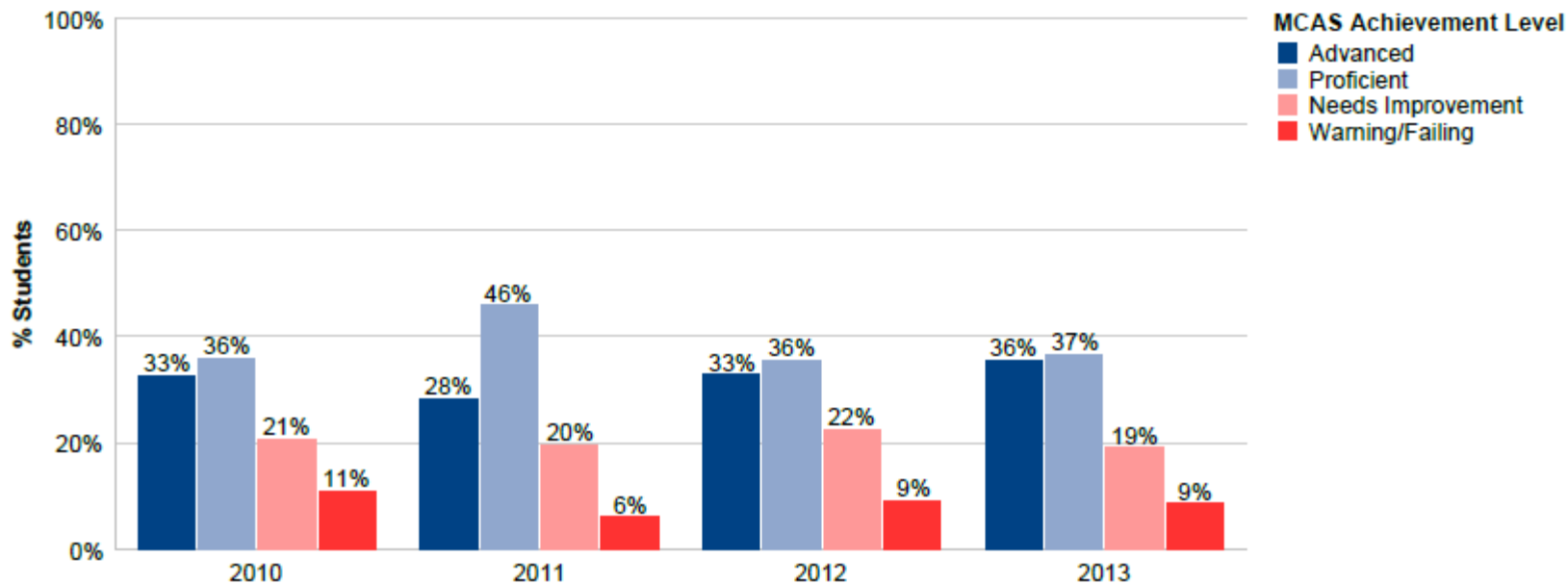
Student Group: All Students



	2010		2011		2012		2013	
	District	State	District	State	District	State	District	State
Advanced	22%	15%	29%	17%	28%	18%	24%	16%
Proficient	58%	54%	55%	51%	52%	48%	55%	51%
Needs Improvement	14%	21%	15%	23%	15%	22%	18%	23%
Warning/Failing	6%	9%	2%	9%	5%	11%	3%	10%
N Students	318	72,172	323	71,491	307	71,589	336	71,602
CPI	92.5	86.8	94.7	86.6	92.8	84.8	91.7	85.1
Median SGP	54.0	50.0	52.0	50.0	44.0	50.0	49.0	52.0

Grade 6 – Math 2010-2013

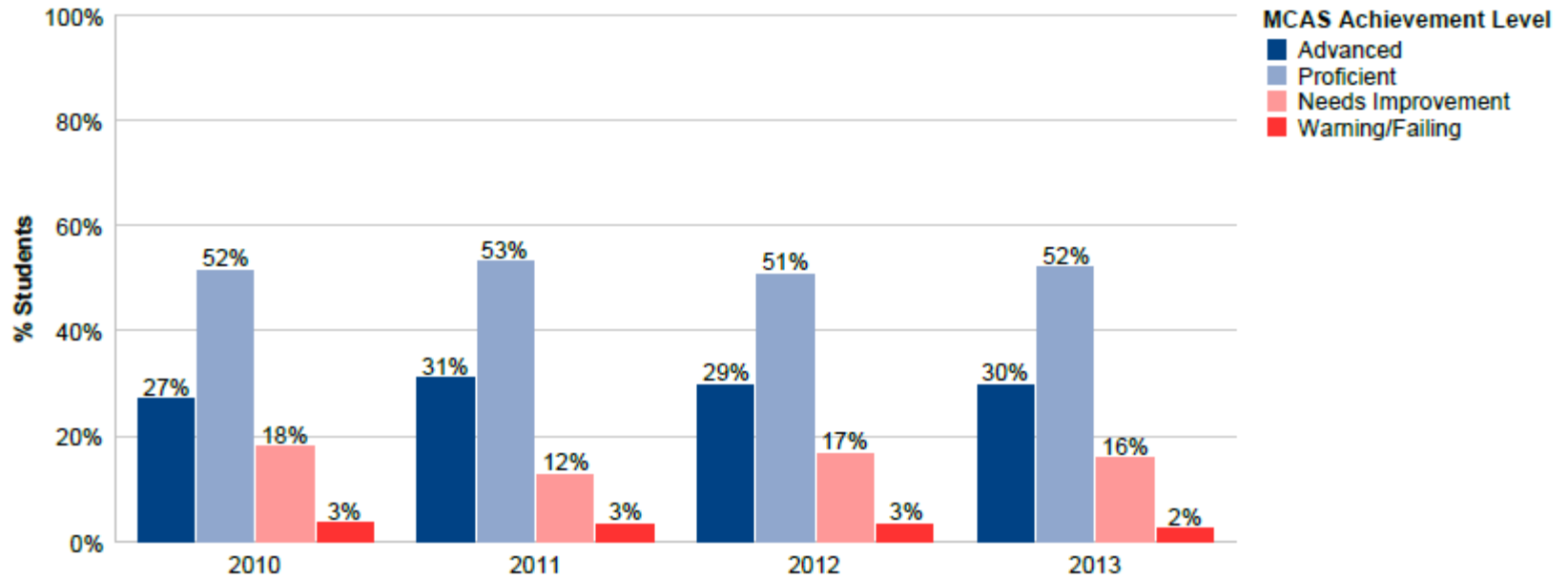
Student Group: All Students



	2010		2011		2012		2013	
	District	State	District	State	District	State	District	State
Advanced	33%	27%	28%	26%	33%	27%	36%	25%
Proficient	36%	32%	46%	32%	36%	33%	37%	35%
Needs Improvement	21%	25%	20%	25%	22%	24%	19%	24%
Warning/Failing	11%	16%	6%	16%	9%	16%	9%	15%
N Students	318	72,177	325	71,536	309	71,640	335	71,642
CPI	85.5	79.7	89.2	79.6	86.9	80.5	86.6	80.3
Median SGP	63.0	50.0	38.0	50.0	46.0	50.0	46.0	50.0

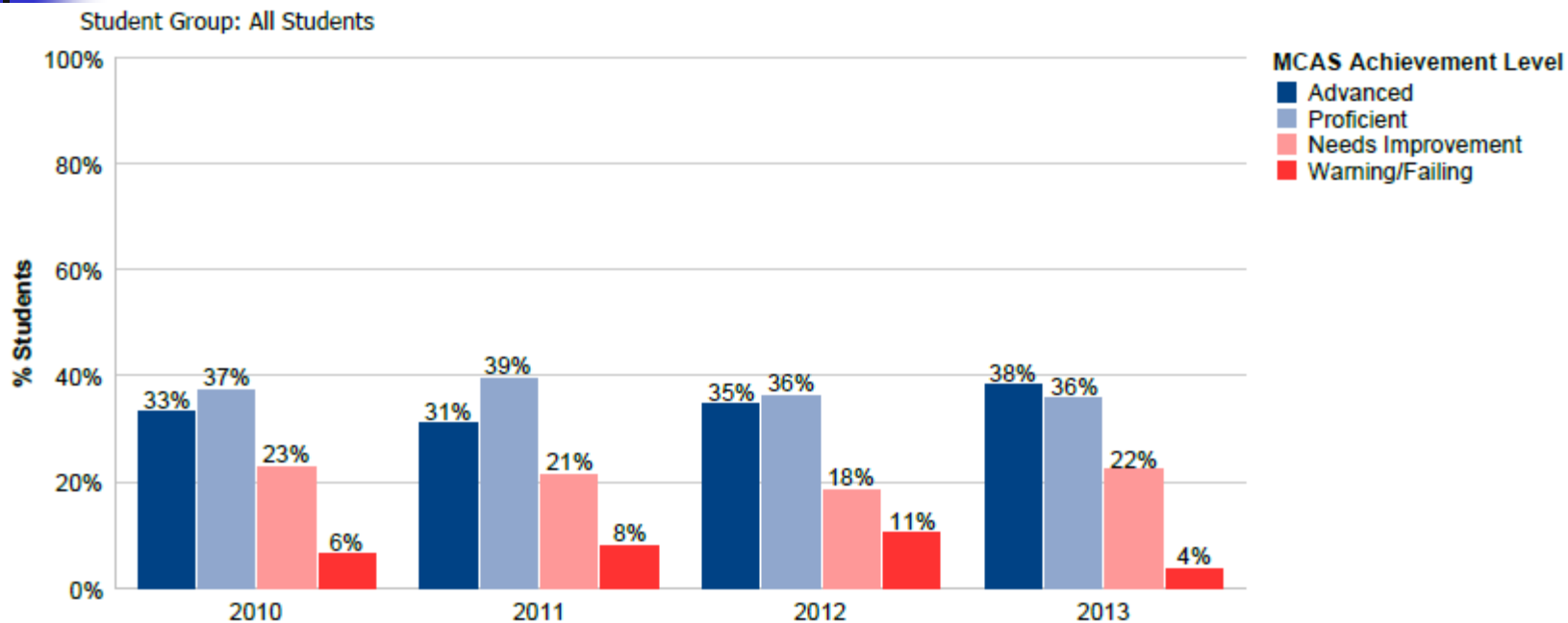
Grade 5 – ELA 2010-2013

Student Group: All Students



	2010		2011		2012		2013	
	District	State	District	State	District	State	District	State
Advanced	27%	16%	31%	17%	29%	17%	30%	18%
Proficient	52%	47%	53%	50%	51%	44%	52%	47%
Needs Improvement	18%	28%	12%	24%	17%	28%	16%	24%
Warning/Failing	3%	10%	3%	9%	3%	11%	2%	10%
N Students	324	71,007	312	71,394	339	71,423	328	70,879
CPI	92.3	84.2	94.6	86.0	92.2	82.5	92.9	84.7
Median SGP	52.0	50.0	59.0	50.0	58.0	50.0	56.0	52.0

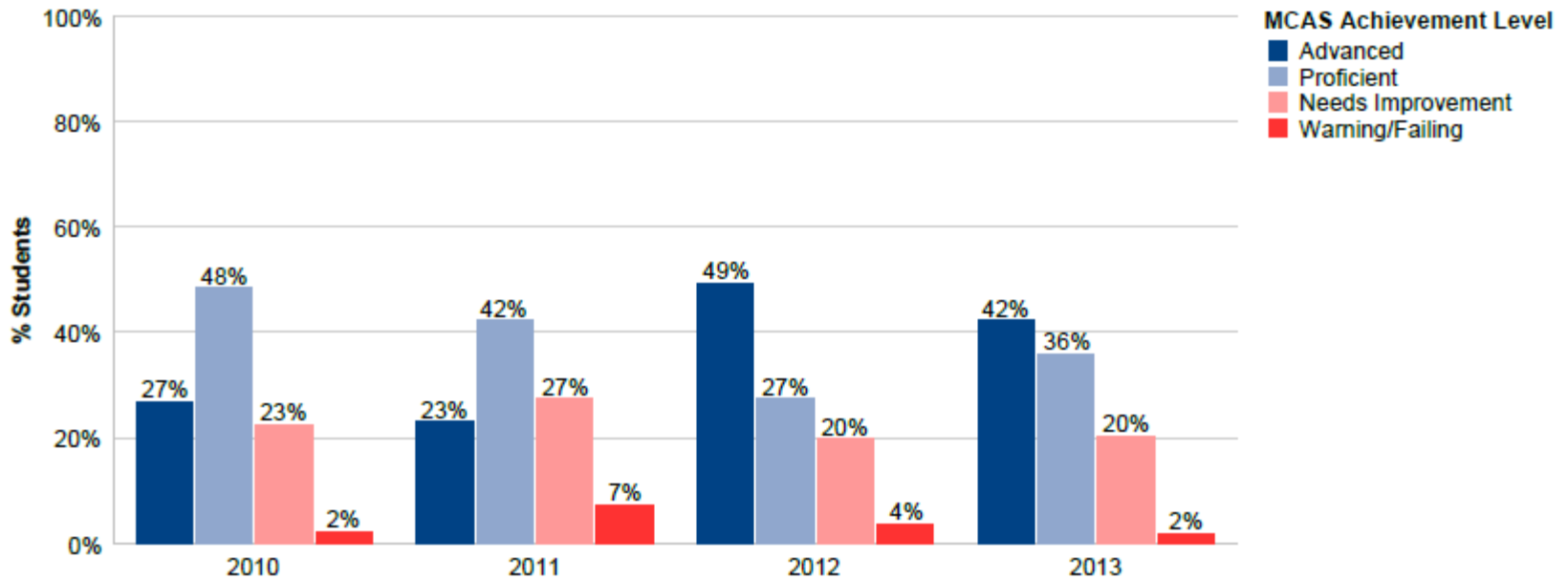
Grade 5 – Math 2010-2013



	2010		2011		2012		2013	
	District	State	District	State	District	State	District	State
Advanced	33%	25%	31%	25%	35%	25%	38%	28%
Proficient	37%	30%	39%	34%	36%	32%	36%	33%
Needs Improvement	23%	28%	21%	26%	18%	26%	22%	25%
Warning/Failing	6%	17%	8%	15%	11%	17%	4%	14%
N Students	324	70,946	312	71,463	339	71,484	328	70,926
CPI	87.5	77.4	86.6	79.8	85.2	78.4	88.9	80.6
Median SGP	50.0	50.0	48.0	50.0	49.0	50.0	57.0	54.0

Grade 5 – Science 2010-2013

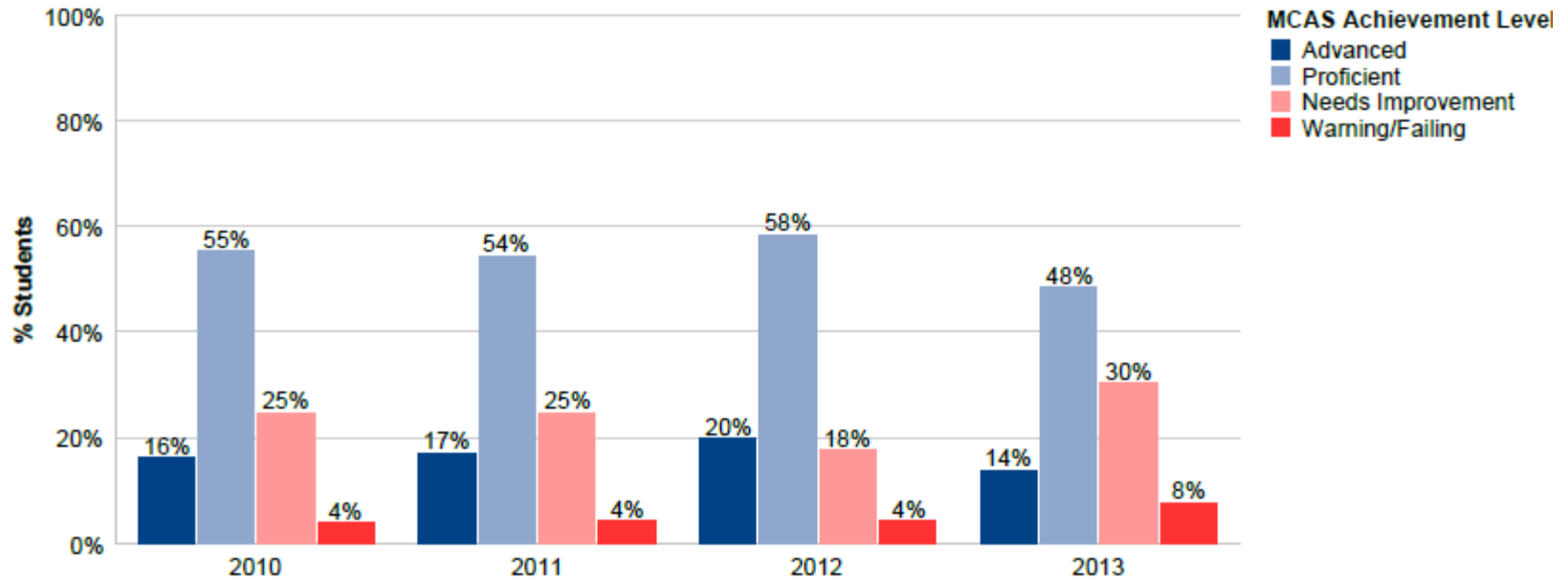
Student Group: All Students



	2010		2011		2012		2013	
	District	State	District	State	District	State	District	State
Advanced	27%	15%	23%	14%	49%	22%	42%	20%
Proficient	48%	38%	42%	36%	27%	30%	36%	31%
Needs Improvement	23%	36%	27%	36%	20%	34%	20%	36%
Warning/Failing	2%	11%	7%	15%	4%	14%	2%	12%
N Students	324	70,931	311	71,382	339	71,373	327	70,842
CPI	91.3	79.7	86.7	77.0	90.9	77.8	92.1	78.5

Grade 4 – ELA 2010-2013

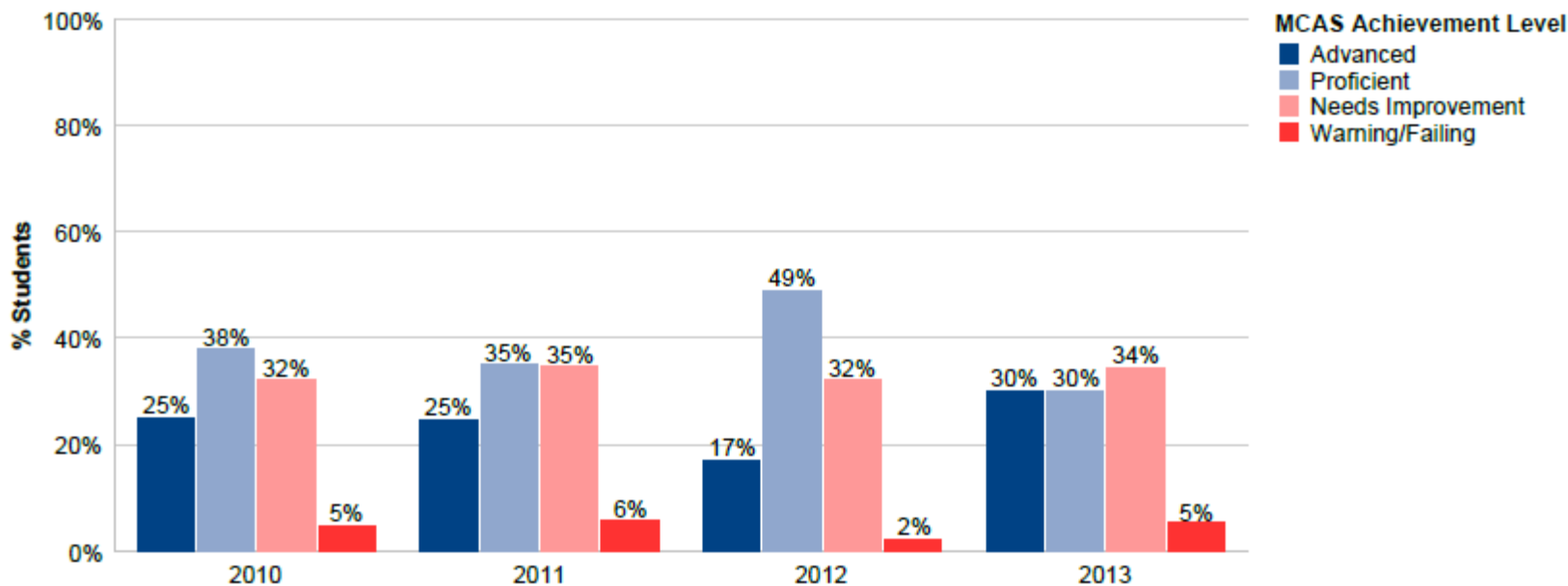
Student Group: All Students



	2010		2011		2012		2013	
	District	State	District	State	District	State	District	State
Advanced	16%	11%	17%	10%	20%	13%	14%	10%
Proficient	55%	43%	54%	43%	58%	44%	48%	43%
Needs Improvement	25%	35%	25%	35%	18%	30%	30%	33%
Warning/Failing	4%	12%	4%	12%	4%	14%	8%	13%
N Students	309	70,911	334	70,920	323	70,264	304	70,605
CPI	91.2	80.1	89.3	79.4	90.9	80.0	84.9	78.9
Median SGP	57.0	50.0	60.0	51.0	57.5	50.0	51.0	49.0

Grade 4- Math 2010-2013

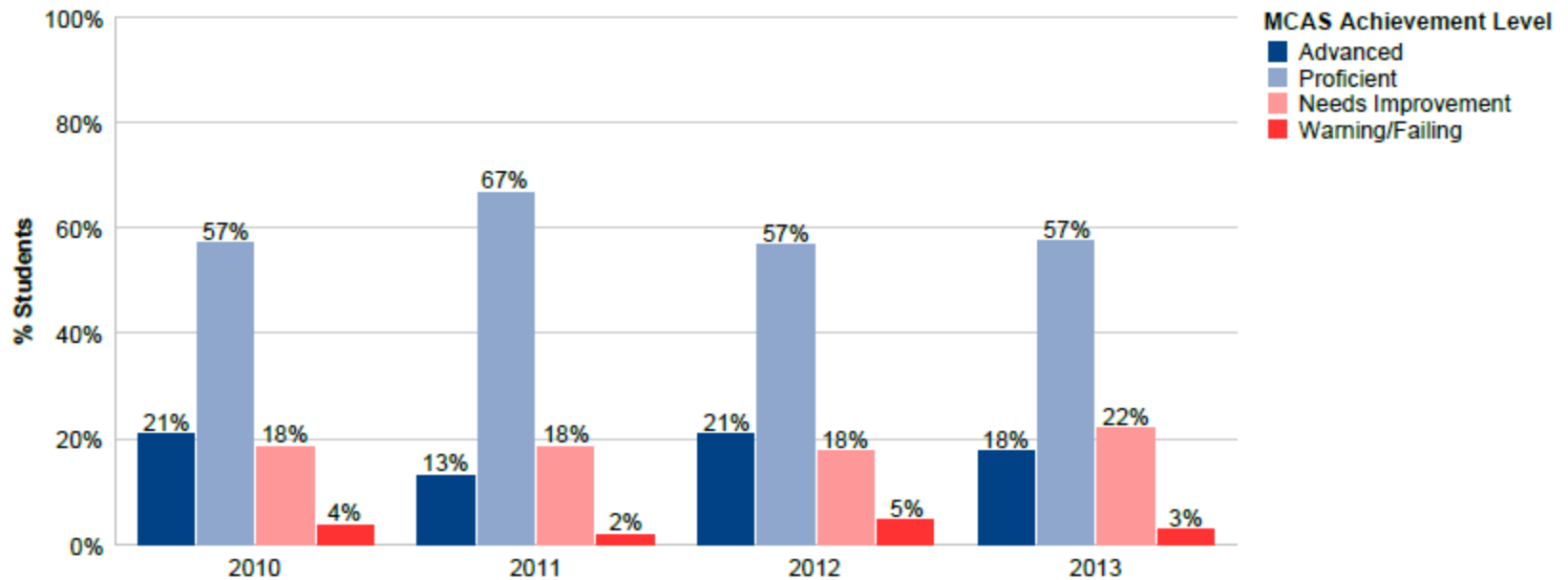
Student Group: All Students



	2010		2011		2012		2013	
	District	State	District	State	District	State	District	State
Advanced	25%	16%	25%	15%	17%	16%	30%	18%
Proficient	38%	32%	35%	32%	49%	35%	30%	34%
Needs Improvement	32%	41%	35%	42%	32%	36%	34%	38%
Warning/Failing	5%	11%	6%	11%	2%	12%	5%	10%
N Students	311	70,924	334	71,101	324	70,425	305	70,903
CPI	87.5	78.7	84.4	78.4	87.6	79.2	84.8	80.2
Median SGP	54.0	49.0	48.0	50.0	46.5	50.0	60.0	54.0

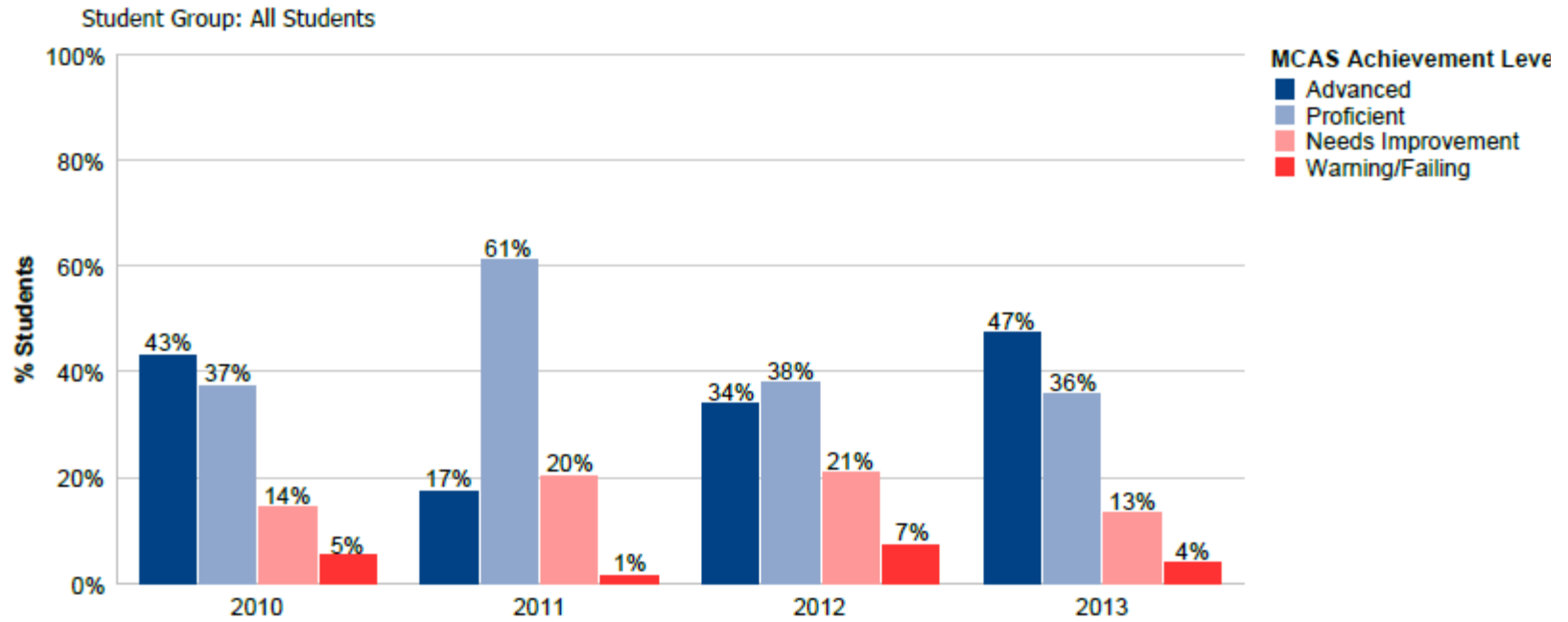
Grade 3 – ELA 2010-2013

Student Group: All Students



	2010		2011		2012		2013	
	District	State	District	State	District	State	District	State
Advanced	21%	14%	13%	11%	21%	15%	18%	12%
Proficient	57%	49%	67%	50%	57%	46%	57%	45%
Needs Improvement	18%	30%	18%	30%	18%	30%	22%	36%
Warning/Failing	4%	8%	2%	9%	5%	9%	3%	8%
N Students	326	70,622	316	69,978	301	70,709	317	70,499
CPI	92.5	85.8	93.3	83.9	91.1	84.1	91.0	83.3

Grade 3 – Math 2010-2013



	2010		2011		2012		2013	
	District	State	District	State	District	State	District	State
Advanced	43%	25%	17%	14%	34%	27%	47%	31%
Proficient	37%	40%	61%	52%	38%	34%	36%	36%
Needs Improvement	14%	24%	20%	25%	21%	25%	13%	22%
Warning/Failing	5%	11%	1%	10%	7%	14%	4%	11%
N Students	326	70,552	316	70,035	301	70,763	317	70,581
CPI	91.0	83.8	92.6	84.7	87.7	80.9	92.6	84.3

Summary 2013 MCAS: Change in Performance Advanced and Proficient

	Percentage of Students Scoring <i>Proficient</i> and higher								
	English Language Arts			Mathematics			Science & Tech/Eng.		
	2012	2013	Change	2012	2013	Change	2012	2013	Change
Grade 3	78	75	-3	72	83	+11			
Grade 4	78	62	-16	66	60	-6			
Grade 5	80	82	+2	71	74	+3	76	78	+2
Grade 6	80	79	-1	69	73	+4			
Grade 7	92	86	-6	62	59	-3			
Grade 8	92	93	+1	63	65	+2	60	58	-2
Grade 10	95	96	+1	87	86	-1	86	85	-1
							79	N/A	Technology/ Engineering



Cohort comparison Science

Science Cohort Data

Year	Grade	10	8	5
2013		85 (Biology)	58	78
2012		60		
2011				
2010			75	
2009		61		

Progress & Performance Index (PPI) "replaces" AYP



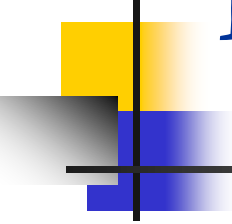
- Used to monitor progress toward goal of reducing the proficiency gap by half by 2016-2017
- Reported as an annual figure and reported as a 4-year figure



Core Indicators

- Seven core indicators
 - ELA achievement
 - Math achievement
 - Science achievement
 - ELA growth/improvement (median SGP)
 - Math growth/improvement (median SGP)
 - Cohort graduation rate
 - Annual dropout rate
- Divide total number of points by total number of indicators

How Annual PPI is Calculated



$$\begin{array}{l} \text{Points} \\ \text{Earned For} \\ \text{Core} \\ \text{Indicators} \\ \text{(Between 0 \& } \\ \text{700)} \\ \\ + \\ \\ \text{Points} \\ \text{Earned for} \\ \text{Extra} \\ \text{Credit} \\ \text{Indicators} \\ \text{(25 Each)} \end{array} \div \begin{array}{l} \text{Number of} \\ \text{Core} \\ \text{Indicators} \\ \text{(Between 1 \& } \\ \text{7)} \end{array} = \text{Annual} \\ \text{PPI}$$



Cumulative PPI - Example

Progressively more weight to recent years

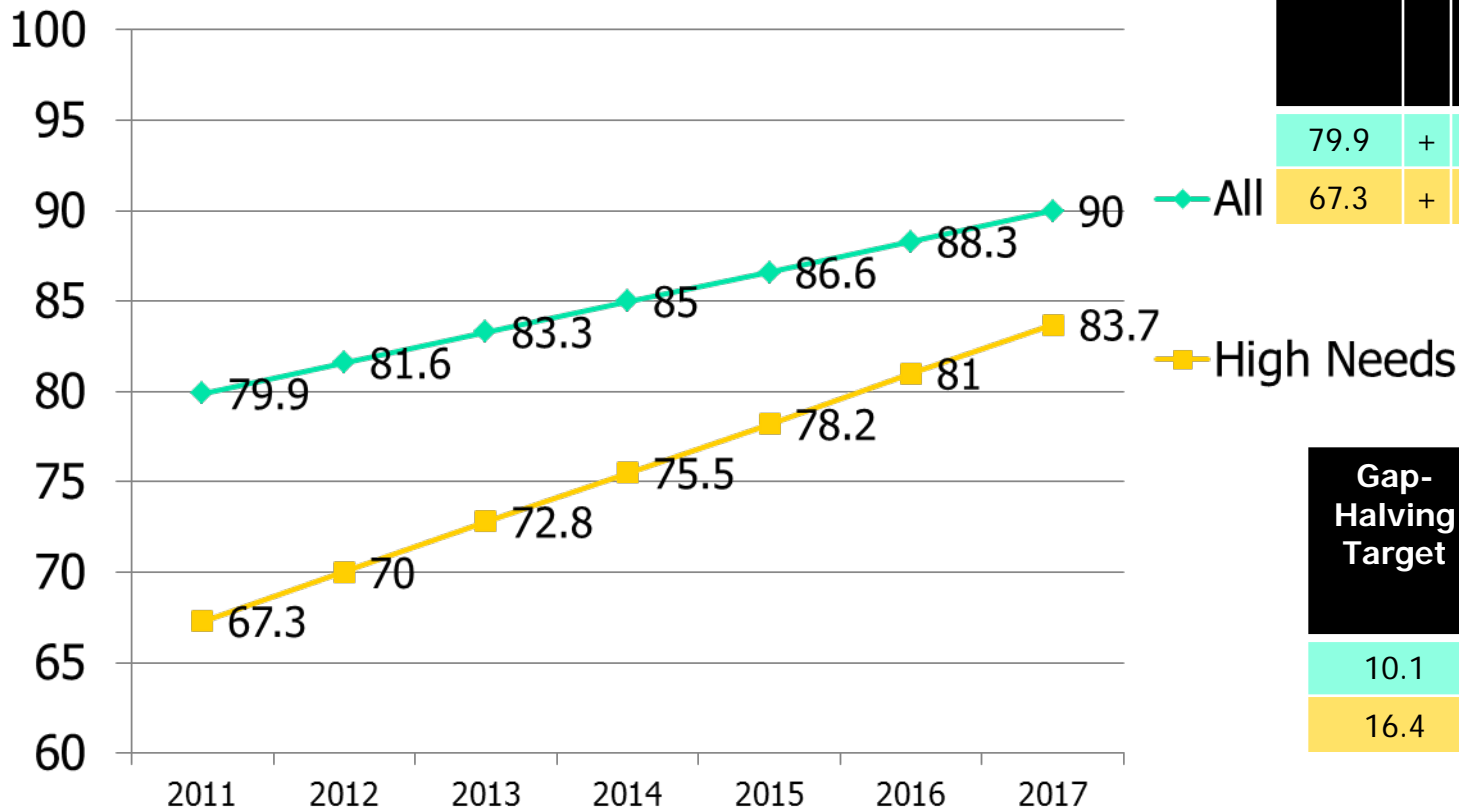
- Most recent year counts 40% of score
- The three years prior weighted 30, 20, 10% respectively

Year	Annual PPI	Multiplier	Points
2013	90	4	360
2012	90	3	270
2011	80	2	160
2010	60	1	60
Total Points:			850
Cumulative PPI (Total Divided by Number of Multipliers):			85

CPI Targets

Long Term Target (100)	-	2011 CPI (Start Value)	=	Gap	/2	=	Gap-Halving Target
100	-	79.9	=	20.1	/2	=	10.1
100	-	67.3	=	32.7	/2	=	16.4

2011 CPI	+	Gap-Halving Target	=	2017 Target
79.9	+	10.1	=	90
67.3	+	16.4	=	83.7



Gap-Halving Target	/6 Years	=	Annual Targets
10.1	/6	=	1.7
16.4	/6	=	2.7

Walpole's Accountability Data

Accountability Information

[About the Data](#)

Accountability and Assistance Level


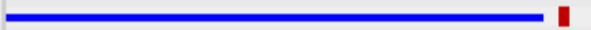






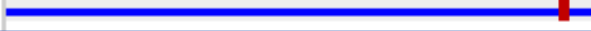
Level 2

One or more schools in the district classified into Level 2

This district's determination of need for special education technical assistance or intervention

Meets Requirements -At Risk (MRAR)

This district's progress toward narrowing proficiency gaps (Cumulative Progress and Performance Index: 1-100)

Student Group (Click group to view subgroup data)	On Target = 75 or higher - ■		View Detailed 2013 Data
	Less progress	More progress	
All students		77	Met Target
High needs		72	Did Not Meet Target
Low income		71	Did Not Meet Target
ELL and Former ELL		62	Did Not Meet Target
Students w/disabilities		58	Did Not Meet Target
Amer. Ind. or Alaska Nat.		-	-
Asian		100	Met Target
Afr. Amer./Black		67	Did Not Meet Target
Hispanic/Latino		71	Did Not Meet Target
Multi-race, Non-Hisp./Lat.		-	-
Nat. Haw. or Pacif. Isl.		-	-
White		82	Met Target



Focus Areas for 2013-2014

- Math Grades PreK-8

(Goal >80% Proficient)

- Improve Math performance in all grades

- ELA Grades 3-8

(Goal >80% Proficient across the district)

- Science Grades 5 & 8

- Goal to achieve >80% Proficient
- Additional resources provided for 6-8 Technology instruction FY13

- High School Science

- Analyze areas for greater improvement



Strategies for Improvement – Next Steps

- Continue data analysis (School and District Data Teams)
 - Individual student analysis
 - Item analysis
 - Cohort analysis
 - Growth data
- Implement interventions and strategies for individuals (RTI)
- Increase use of formative assessment
- Support sub-groups with Special Ed and ELL staff
- Provide targeted support in grade 8 and high school through academic support grant
- Continue after school MCAS support
- Provide focused math and reading support to targeted students through Title I



Strategies for Improvement (continued)

- Professional Learning Community Focus on student achievement goals, especially for Writing and Math
- Focused Professional Development – Math
- Assign staff to attend specific workshops/courses
- Focused Math instruction for subgroups grades 3-10
- Implement new Mathematics Resources

Summary



- Walpole students continue to perform well above the state average.
- Positive trends for CPI/PPI
- Student growth percentiles show improvement; moderate growth
- All schools continue to use intervention strategies to reduce the achievement gap
- Principals and teachers have identified goals for specific areas of improvement